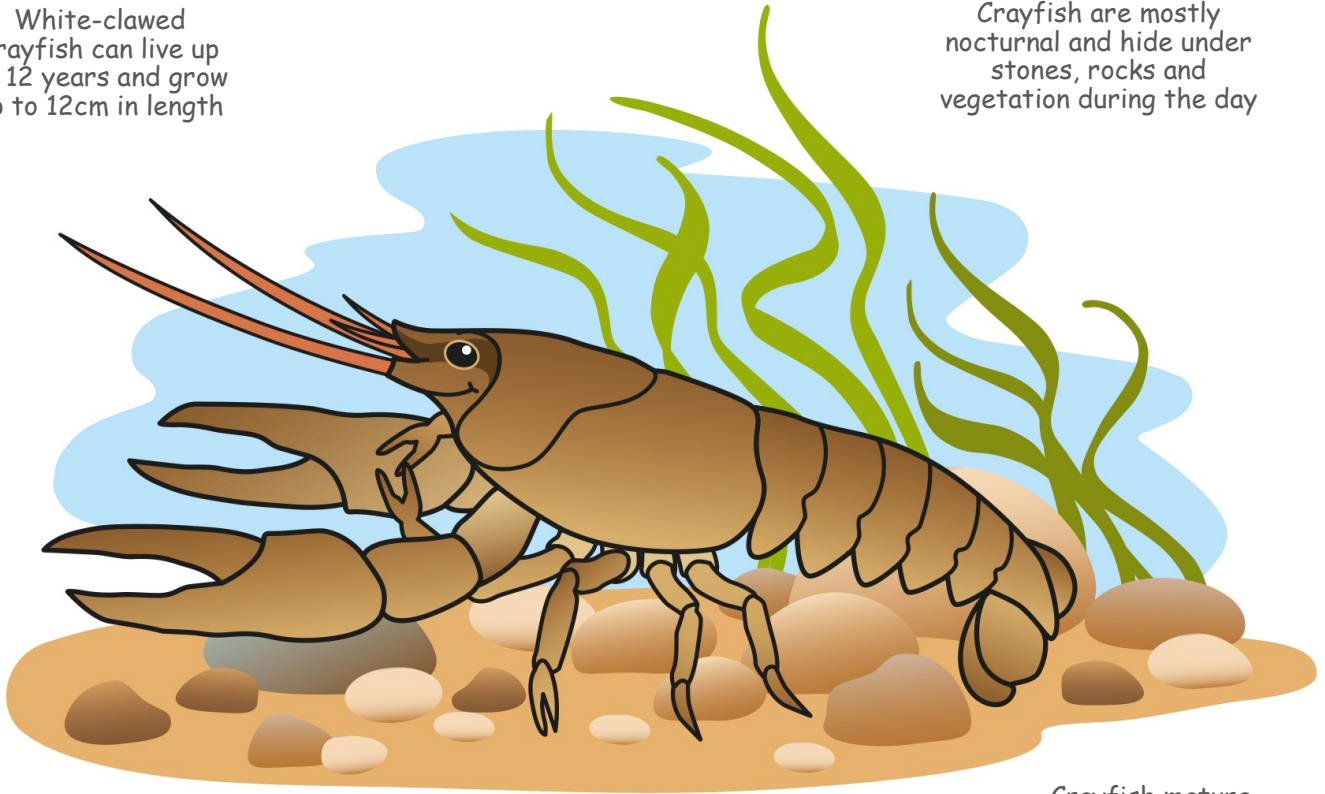


White-clawed Crayfish

White-clawed crayfish can live up to 12 years and grow up to 12cm in length

Crayfish are mostly nocturnal and hide under stones, rocks and vegetation during the day



The body is brown-bronze in colour, whilst the claws are pale underneath - hence its name

©www.sinclair-illustration.co.uk

Crayfish mature after 3-4 years. They moult and regrow their carapace every two years

- * The scientific name for White-clawed crayfish is *Austropotamobius pallipes*
- * It is one of the UK's largest freshwater invertebrates
- * These native crayfish are classed as endangered, which means they are at risk of disappearing from our rivers
- * They have declined by 70% in the last 50 years
- * The River Kent system is one of the best places in England for white-clawed crayfish
- * White-clawed crayfish need to live in well oxygenated, calcium-rich, healthy rivers. Calcium helps to strengthen their outer shell (carapace) just like we need calcium for our bones!
- * If a crayfish loses a leg or claw, it will grow a new one back!

All mixed up!

Can you work out these words?

LACW _ _ _ _

HAYCRIFS _ _ _ _ _ _ _ _

MILCACU _ _ _ _ _ _ _ _

PRACCEAE _ _ _ _ _ _ _ _

White-clawed Crayfish

- * The white-clawed crayfish is an omnivore so eats invertebrates, dead organic matter, and plants
- * Female crayfish carry the eggs for around 9 months. After they hatch the little crayfish will hitch a ride on mum to keep safe for a few weeks
- * The main threat to white-clawed crayfish is the Signal crayfish. It is bigger, more aggressive and carries a plague that native crayfish have no resistance to. It was introduced from the USA, has red undersides to its claws, and eats white-clawed crayfish as well as other invertebrates, fish and fish eggs

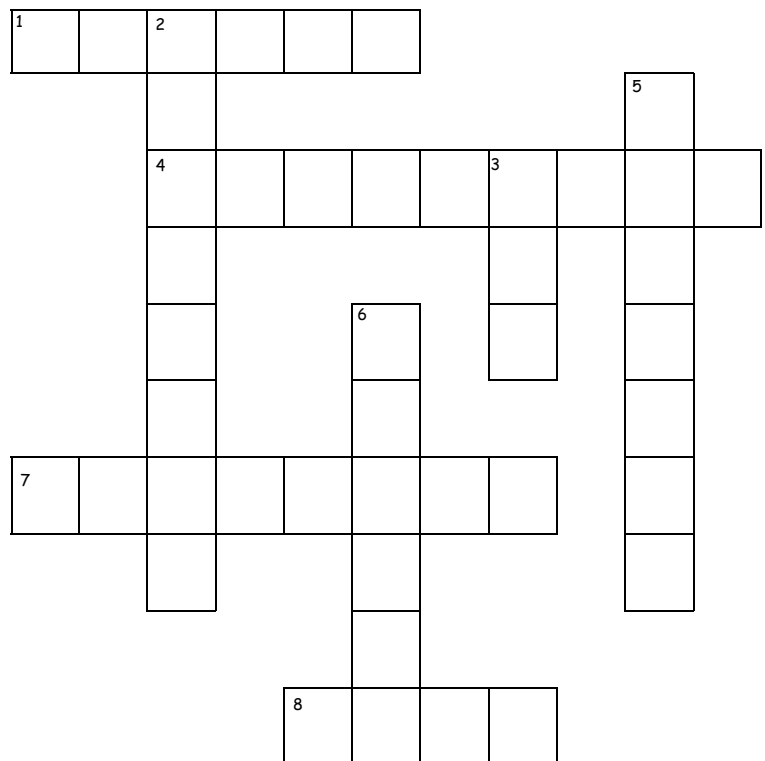
Crossword

Across

1. What colour is a crayfish
4. Crayfish are active at night
7. What the shell of the crayfish is called
8. One of the best river systems to see white-clawed crayfish

Down

2. Describes eating both animals and plants
3. The claw colour of signal crayfish
5. What is needed for a strong shell
6. What signal crayfish carry that threatens native crayfish



Why don't you...

- Write a poem about white-clawed crayfish
- With an adult go for a walk along a river to see if you can spot invertebrates in the water
- If you visit Kendal look out for otters on the river - their favourite food is crayfish!

LifeR4Ever Kent project is

- Improving the rivers to make them better for freshwater pearl mussels as well as lots of other wildlife
- Planting trees, removing barriers to fish migration and tackling invasive plant species
- Breeding lots of freshwater pearl mussels to release into the rivers



A partnership project. Co-funded by the European Union.

All mixed up answers:
Claw, crayfish, calcium, carapace

Crossword answers:
1. bronze 2. omnivore 3. red 4. nocturnal 5. calcium 6. plague 7. carapace 8. Kent